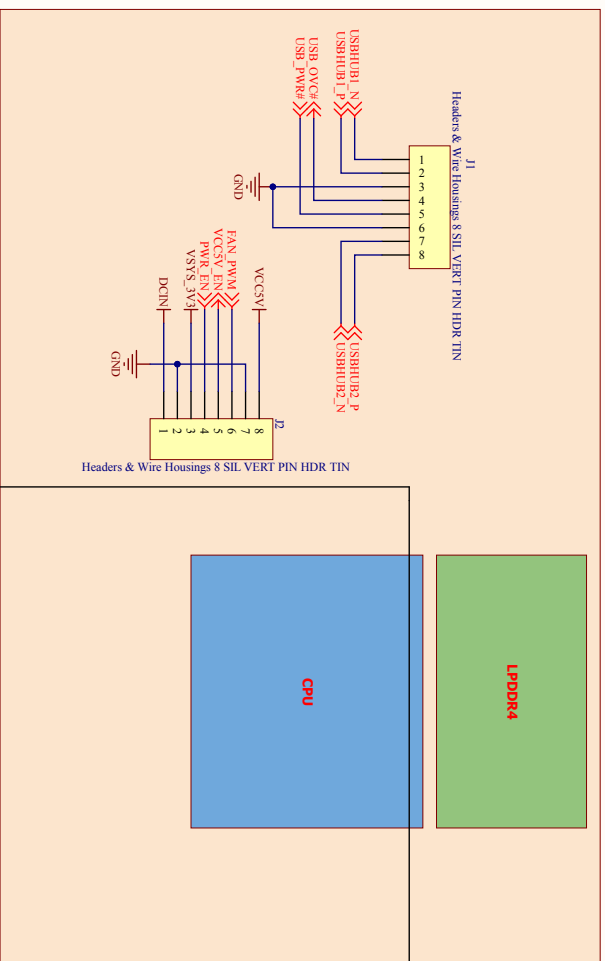


JeVois-Pro Daughter Board

TOP VIEW (CAN SEE CPU CHIP)



Title		01 - Overview.SchDoc	
Size	Number	Revision	
B			
Date:	9/17/2021	Sheet of	
File:	C:\Users\01 - Overview.SchDoc	Drawn By:	

1 2 3 4 5 6

A

B

C

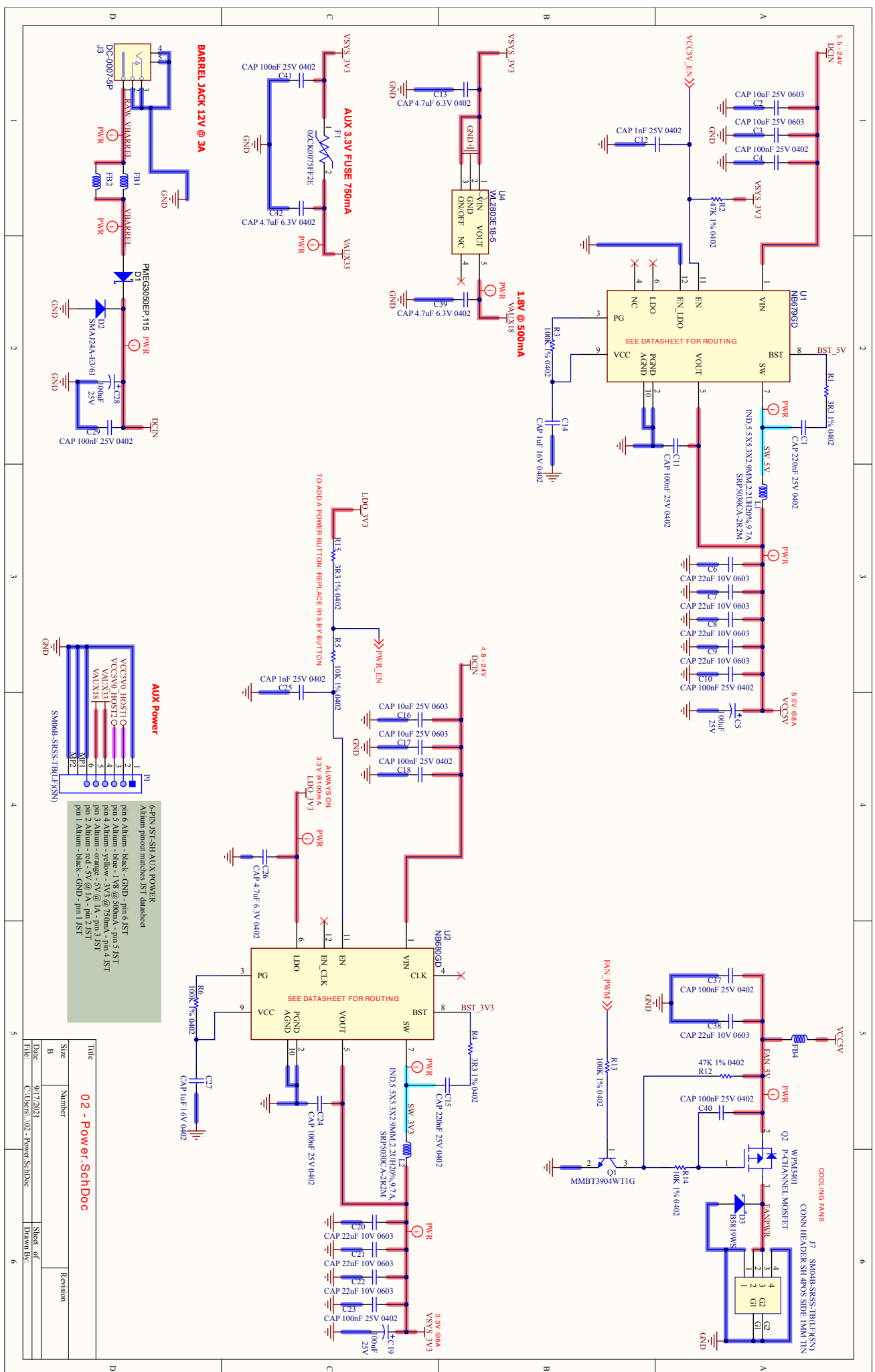
D

A

B

C

D

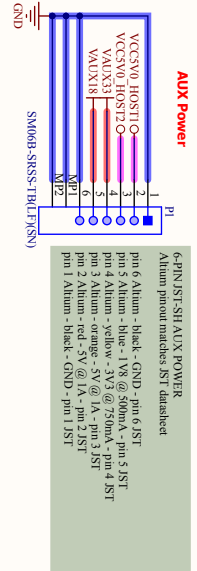


1 2 3 4 5 6

Title	Number	Revision
02 - Power_SchDoc		

Date: 9/17/2021
 File: C:\Users\j02 - Powerschdoc

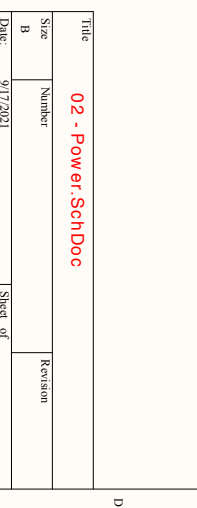
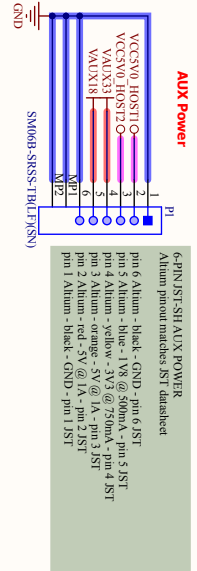
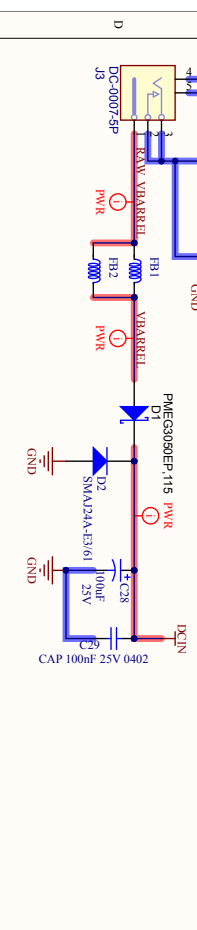
Sheet of: 1
 Drawn By:



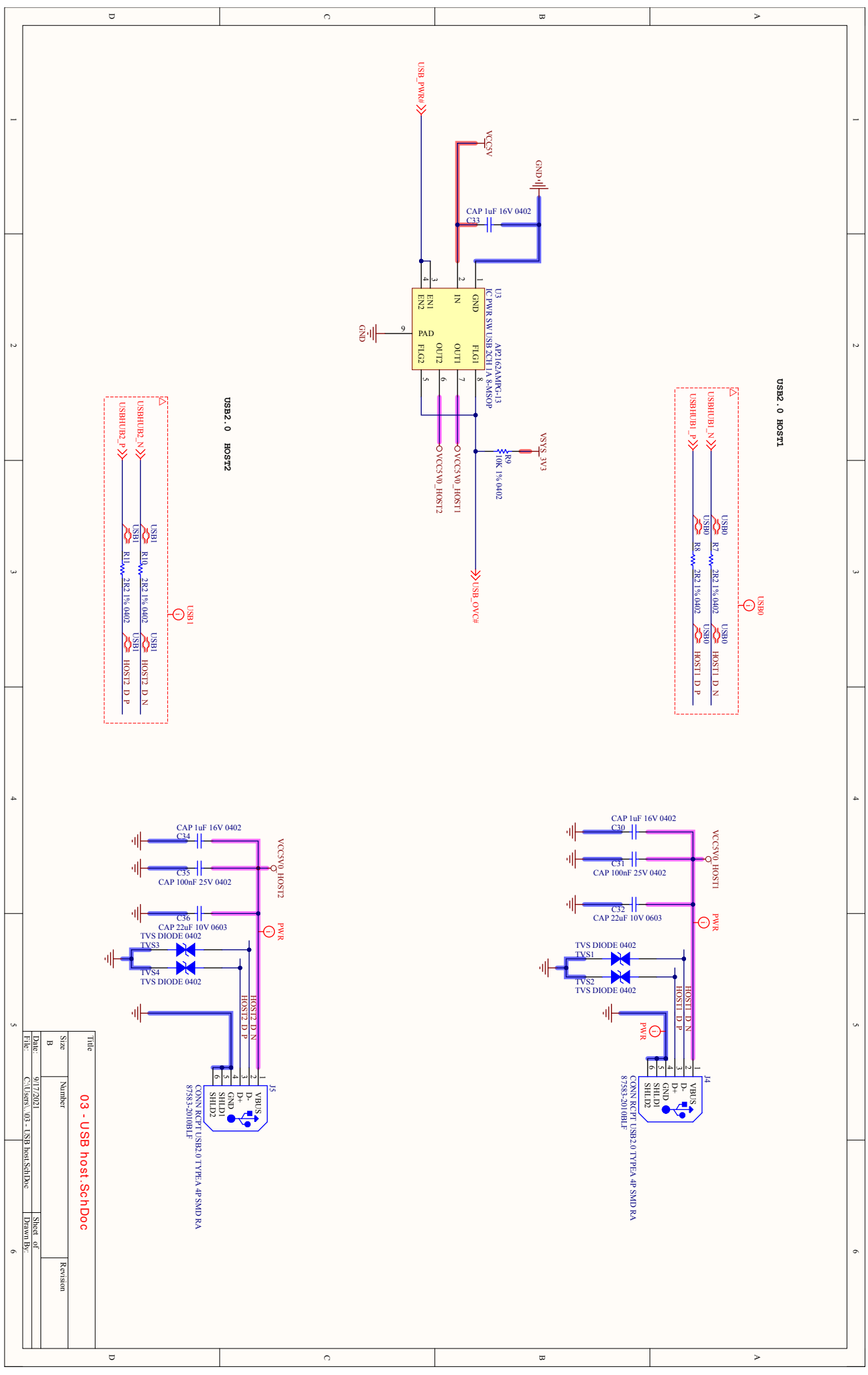
AUX Power

6-PIN JST-SH AUX POWER
 Altium pinout matches SST datasheet

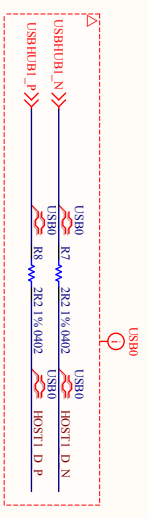
- pin 6 Altium - black - GND - pin 6 SST
- pin 5 Altium - blue - 1V8 @ 500mA - pin 5 SST
- pin 3 Altium - orange - 5V @ 1A - pin 3 SST
- pin 2 Altium - red - 5V @ 1A - pin 2 SST
- pin 1 Altium - black - GND - pin 1 JST



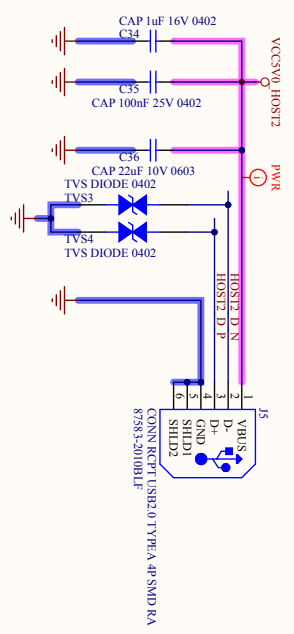
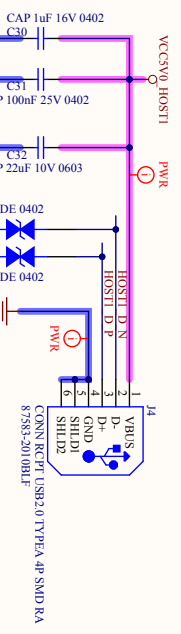
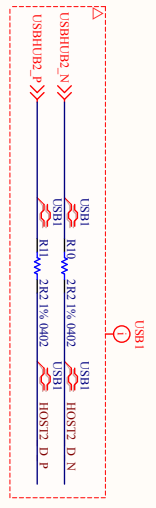
9/17/2021
 C:\Users\j02 - Powerschdoc



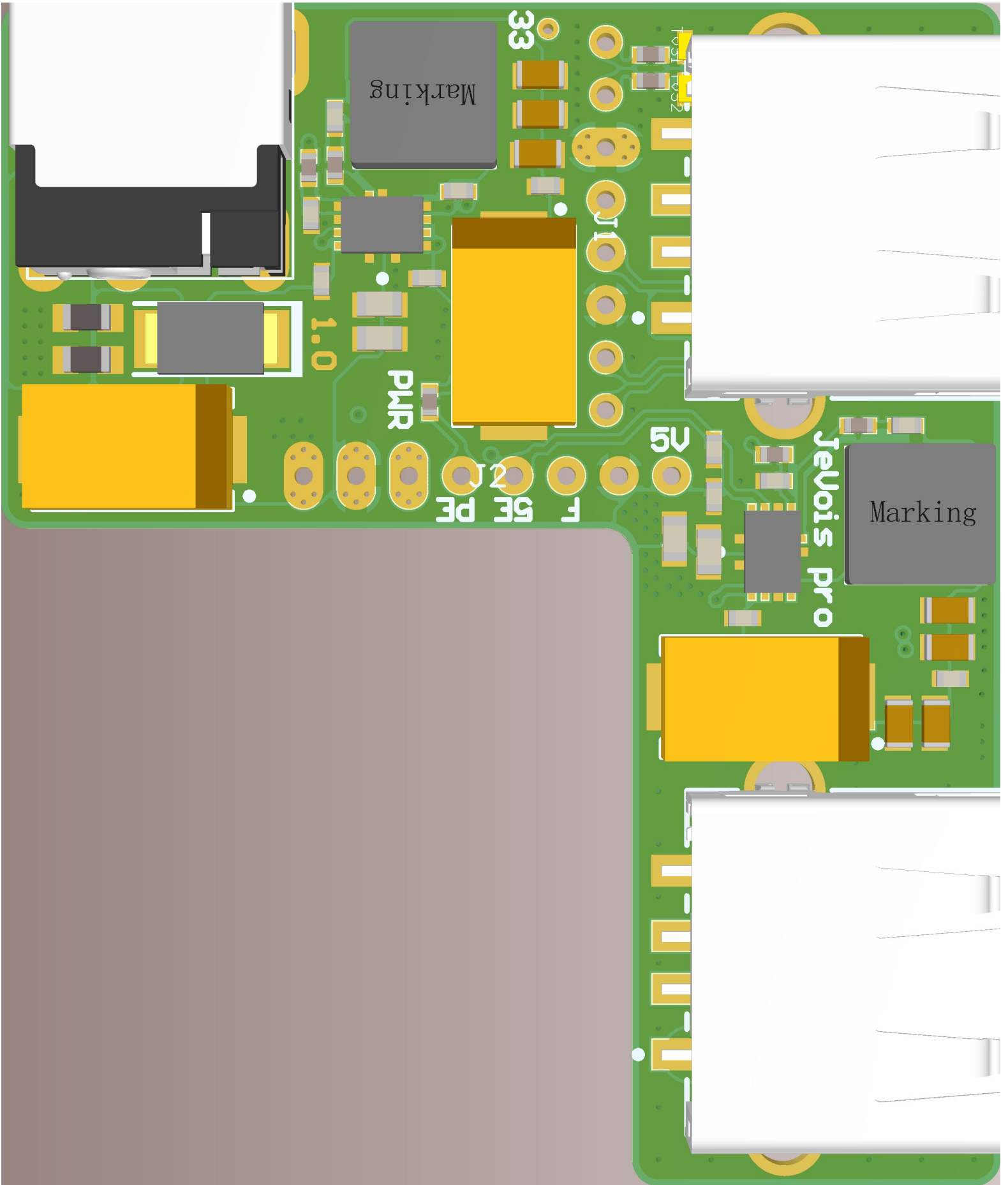
USB2_0 HOST1



USB2_0 HOST2



Title		03 - USB host_SchDoc	
Size	Number	Revision	
B			
Date:	9/17/2021	Sheet of	1
File:	C:\Users\j03 - USB host\SchDoc	Drawn By:	



Marking

33

TOS1 TOS2

1.0

PWR

F 5E PE

N5

Jeuvois pro

Marking

